

STRAIGHT UHC CONNECTOR C-C FEMALE CRIMP
CABLE 3.6/75 DOUBLE SCREEN PACK 20

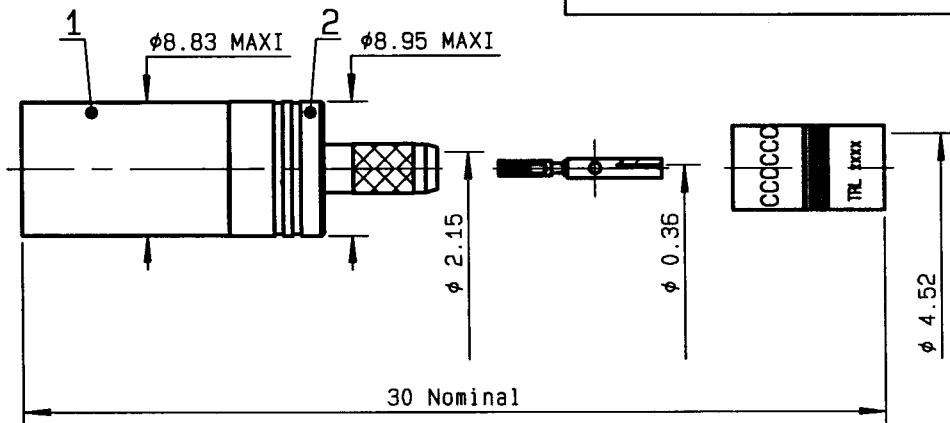
Series : UHDC 43

1 / 1

96-0624-001

SHN

SOCKET UHDC43/5GTIS



CABLES : BT3002, TZC75024

CHARACTERISTICS

NOMINAL IMPEDANCE	75	Ω
FREQUENCY RANGE	0-3	GHz
TEMPERATURE RATING	-40/+100	$^{\circ}C$
VSWR	NA +	- x F(GHz)Max1
RF INSERTION LOSS	NA	\sqrt{F} (GHz) dB Max1
VOLTAGE RATING	500	Vrms Max
DIELECTRIC WITHSTANDING VOLTAGE	1500	Vrms min
INSULATION RESISTANCE	500	M Ω min
HERMETIC SEAL	NA	Atm.cm3/s
LEAKAGE (pressurized only)	NA	Mpa
WEIGHT	-	gr

STANDARDISATION

CABLE RETENTION

150 N min

CENTER CONTACT RETENTION

Axial force - mating end 22 N min

Axial force - opposite end NA N min

Torque (Min) NA cm.N min

RECOMMENDED TORQUES

Mating	NA	cm.N
Panel nut	NA	cm.N
Clamp nut	NA	cm.N

CONSTRUCTION

CONNECTOR PARTS	MATERIALS	FINISH
BODY	BRASS	NICKEL
OUTER CONTACT	BRONZE	GOLD OVER NICKEL
CENTER CONTACT	BERYLLIUM COPPER	GOLD OVER NICKEL
INSULATOR	WHITE POLYPROPYLENE	-
CRIMPING SLEEVE	BRASS	NICKEL
LATCHING SLEEVE	BRASS (1)	NICKEL
-	PLASTIC (2)	-
-	-	-
-	-	-

ISSUE	REVISION No	DESCRIPTION	BY	DATE
-	-	-	-	-
-	-	-	-	-
-	-	-	-	-
-	-	-	-	-

initiated on 20/02/96

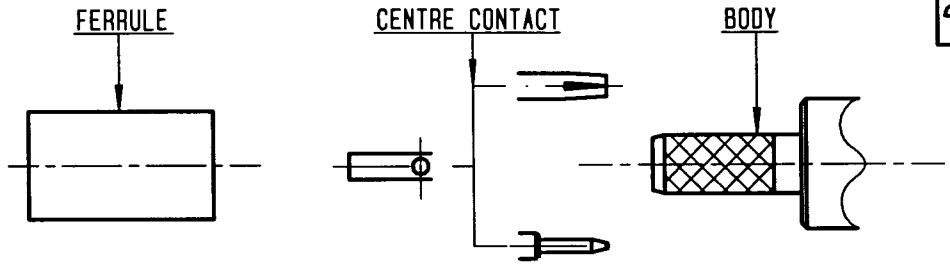
The information given here is subject to change without notice. Design changes may be in order to improve the product



Approval by KDA

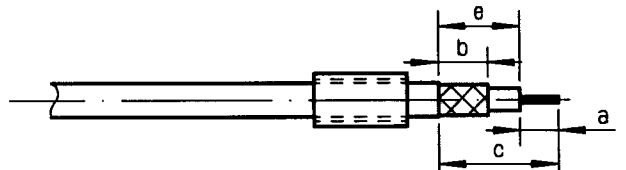
MARTIN

SHN



①

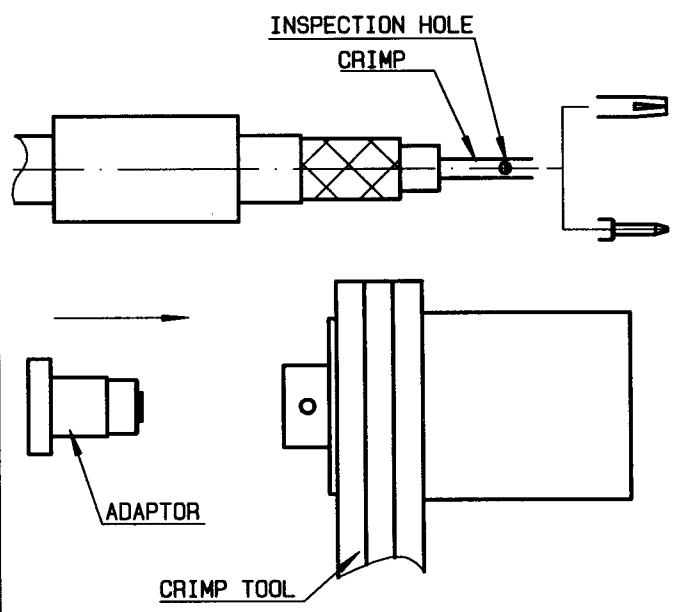
Slide ferrule onto cable.
Strip cable.



Stripping	a	b	c	d	e
inch	0.177	0.315	0.827	0	0.65
mm	4.5	8	21	-	16.5

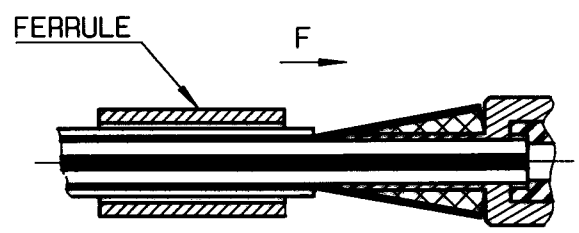
②

Place centre contact on conductor.
(ensure conductor is visible through inspection hole).
Place adaptor in crimp tool.
Insert cable into adaptor. Push home.
Crimp centre contact.
Crimp tool R282 281 010 (Q92434)



③

Guide dielectric into connector while fanning braid. Push home until centre contact 'clicks' into place.



④

Slide crimp sleeve forward until sleeve butts up against body.
Crimp ferrule.
Crimp tool R282 287 000 (Q92316) + die set R282 265 002 (Q92435) (Hex. 4.52).

